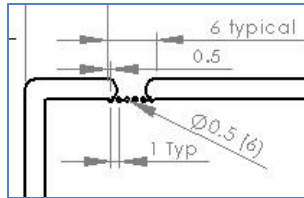




# 6 Typical PCB designs for depaneling

## A) Flush cut style

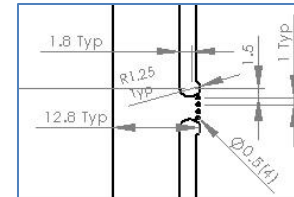


Before cut



After cut detail

## B) Recessed cut style

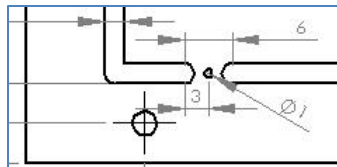


Before cut



After cut detail

## C) Single hole center line cut style

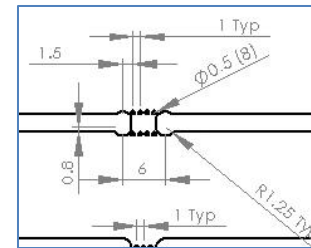


Before cut

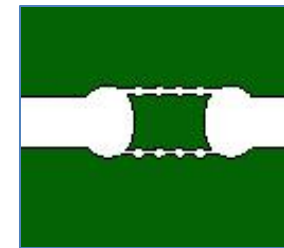


After cut detail

## D) Multi hole center tab style

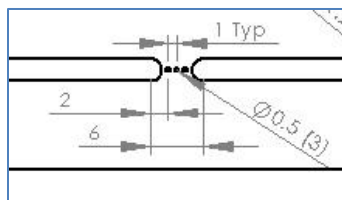


Before cut



After cut detail

## E) Multi hole center Line cut style

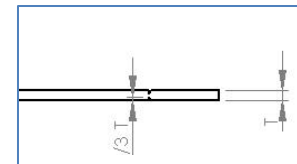


Before cut



After cut detail

## F) V score



Before cut



After cut detail